



富緯傳動工業股份有限公司
A-LINE TELESCOPIC SLIDE CO., LTD

No.18, Ln. 80, Fuzhi Rd., Shalu Dist., Taichung City 43354, Taiwan

Taiwan

台中市沙鹿區福至路80巷18號

+886 4 2636 5941

+886 4 2636 5941

kenjuan301@gmail.com

www.alinetw.com

China

東莞市清溪鎮土橋村金橋工業區金成路3號

0769 8789 1599

0769 8789 1569

3254776986@qq.com

中國代理

總經理 龐先生

Mobile Phone : 13910377617 / 18576372801



HEAVY DUTY TELESCOPIC LINEAR SLIDE

高承載 伸縮式 線性滑軌

MOVING POWERFUL



HEAVY DUTY TELESCOPIC LINEAR SLIDE

高承載 伸縮式 線性滑軌

The **Heavy Duty Telescopic Linear Slide** series is a system of cold-drawn middle carbon steel. The system consists of an "C" beam profile rail and one or more internal sliders with own individual caged ball bearings.

With several sliders, which each runs in its own ball cage, independent and individual of itself, in the guide rail. When sliders moving and stroke for each slider cannot be off set or hit each other within one rail.

A-Line Telescopic Linear slides are special ball bearing guides and slider for high load rating level. Two or more ball bearing mounted guide rails which can be drawn telescopic-stroke and quality guarantee a high reliability.

A-Line Telescopic Linear slides are used in many difference areas, For Example: in the machine construction building, railcars, special vehicles and camp van, in rescue vehicles, or military vehicles, conveyor and storage techniques and so on many others. Telescopic slides are often used for high speed train battery boxes, and fence door systems, protection covers, switch whole set cabinets, cash-machine (ATM) and other.

Performance characteristics:

Available sizes for 300mm – 1300mm

Assembly gap side profile: 23.5 / 20 / 36 / 24 / 18 / 26 / 32 mm

Rails and sliders are made of cold-drawn middle carbon steel.

Balls are made of hardened steel

Max. operating speed 1.0 m/s

Temperature range: from -10 °C to +120 °C



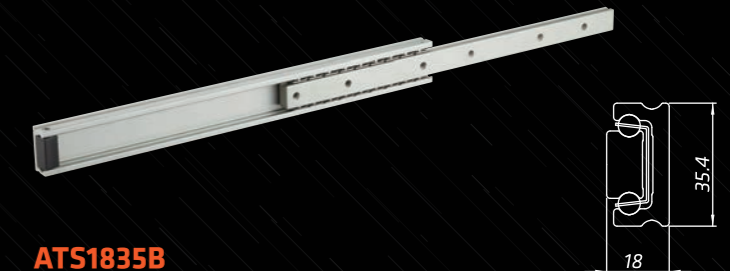
ATS23591B

With Caged Ball Bearing & Self-Cleaning Ball Rail
Guide Rails Made Of Cold-Drawn C40 - 50 Steel
Load Capacity : 280 KGW
Slide Travel : 100% Extension & Short Over Travel
Slide Profile in " Z " Design & Two Way Travel
High Corrosion Resistant Plating
Size : 300mm – 1300mm
Slide Mounted



ATS3635B

Without Caged Ball Bearing & Self-Cleaning Ball Rail
Guide Rails Made Of Cold-Drawn C40 -50 Steel
Load Capacity : 400 KGW
Slide Travel : 100% Extension
Customer Needs : Travel For 120% OR 150% Extension
Two Way Travel
High Corrosion Resistant Plating
Size : 300mm – 1300mm
Slide Mounted



ATS1835B

With Caged Ball Bearing & Self-Cleaning Ball Rail
Guide Rails Made Of Cold-Drawn C40 -50 Steel
Load Capacity : 200 KGW
Slide Travel : 3/4 Extension
Inner Member of External Single Way Travel
High Corrosion Resistant Plating
Size : 300mm – 1300mm
Slide Mounted



ATS2435W

With Ball Bearing Wheels
Guide Rails Made Of Cold-Drawn C40 -50 Steel
Load Capacity : 3 Wheels For 180 KGW
Slide Travel : 3/4 Extension
Internal Single Way Travel
High Corrosion Resistant Plating
Size : 300mm – 1300mm
Slide Mounted



ATS3275B

With Caged Ball Bearing & Self-Cleaning Ball Rail
Guide Rails Made Of Cold-Drawn C40 -50 Steel
Load Capacity : 200 KGW
Slide Travel : 150% Extension & 4 Beams Rails
One Way Direction Travel
High Corrosion Resistant Plating
Size : 300mm – 1300mm
Slide Mounted



ATS2035B

Without Caged Ball Bearing & Self-Cleaning Ball Rail
Guide Rails Made Of Cold-Drawn C40 - 50 Steel
Load Capacity : 200 KGW / Long Service Life
Slide Travel : 3/4 Extension
Internal Single Way Travel
High Corrosion Resistant Plating
Size : 300mm – 1300mm
Slide Mounted



ATS2675B

With Caged Ball Bearing & Self-Cleaning Ball Rail
Guide Rails Made Of Cold-Drawn C40 -50 Steel
Load Capacity : 350 KGW
Slide Travel : 100% Full Extension & 3 Beams Rails
One Way Direction Travel
High Corrosion Resistant Plating
Size : 300mm – 1300mm
Slide Mounted